



RESTORING SCHOOLS, REBUILDING COMMUNITIES

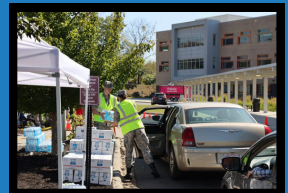
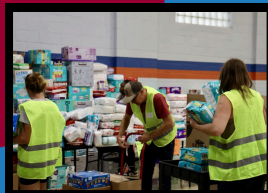


The Levittown School District is honored to partner with Asheville Middle School in Asheville, North Carolina, as we support their community's recovery efforts in the aftermath of Hurricane Helene. The impact of this devastating storm has been profound—many families have lost their homes, their belongings, and tragically, even loved ones. To this day, the city is without access to clean drinking water, and the community is facing immense challenges.

In response, we are collecting funds to assist in replenishing the supplies at their Community Recovery Center, which has already provided vital support to over 1,300 families, including school district staff, by offering basic necessities such as food, cleaning supplies, and school materials. These resources are essential to helping families rebuild their lives.

In addition to fulfilling these immediate needs, we are also committed to helping restore a sense of normalcy for the students of Asheville. Every year, Asheville Middle School organizes a field trip to Washington, D.C. This trip is now in jeopardy due to the overwhelming financial needs in the community. We are proud to support this invaluable experience, ensuring that the next generation of Asheville students can continue this time-honored tradition during this difficult time.

Together, we can make a difference.



To Learn more
about AMS:



To Donate:

